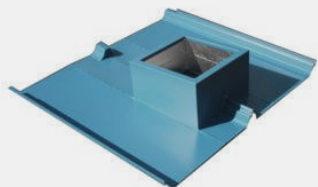
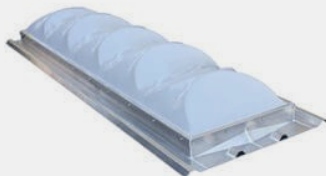


CUSTOM ROOF CURBS



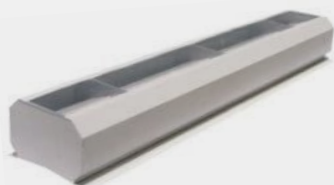
DAYLIGHTING



ROOF HATCHES



RIDGE VENTS



UL SMOKE VENTS



ROOF WALKWAY



GRAVITY VENTS



POWERED VENTILATION



LOUVERS



## R&S Roof Products

# PRODUCT LINE CARD

Roof accessories and building products customized to meet the needs of the pre-engineered building contractor.

# Why choose R&S for your next project?

## ENGINEERS ON STAFF

The expertise of our people is the key to our success. We take time to consult with our customers to provide innovative, cost-effective products and solutions that continuously set new performance standards.

Our team of highly qualified engineers and program managers will take the time to ensure that every detail of your order is carefully planned and executed.

## DIRECT MANUFACTURER

R&S has over 30 years experience in direct manufacturing for thousands of contractors. Our products are custom fabricated to meet the specific profile of any metal panel.

Unlike many of our competitors, R&S is the direct manufacturer of most products we sell. This provides unparalleled control over lead time, quality and price.

## COMPETITIVE PRICING

As the direct manufacturer, R&S allows you to cut out the middle man in the transaction. We manufacture roof curbs, skylights, smoke ventilators, AMCA-rated louvers, ridge vents, access & equipment hatches, roof walkway and more. You can always count on a competitive price.

## PRODUCT CERTIFICATIONS

R&S proudly tests and certifies its products to verify stated performance ratings. These key programs also require periodic re-testing to ensure ratings continue to be met.

- Underwriters Laboratory (Smoke Vents)
- Fenestration and Glazing Industry Alliance—FGIA (Skylights)
- Miami-Dade County (Skylights)

## PRODUCT INNOVATION

We believe in putting a focus on product development, with the goal of finding innovative ways to make our products perform and install better as well as uncovering new products to move the PEMB industry forward.

Have an idea for a new product? Let us know!

## TABLE OF CONTENTS

ROOF CURBS—HVAC	4-5
ROOF CURBS—SKYLIGHT	6
CURB-MOUNT FALL PROTECTION	7
INDUSTRIAL LIDS	7
CURB MOUNT SKYLIGHT	8
RS36 SKYLIGHT FOR HIGH RIB	9
RS24 SKYLIGHT FOR STANDING SEAM	10-11
DAYLIGHTING SMOKE VENT	12
SOLID LID SMOKE VENT	13
COLD STORAGE SMOKE VENT	13
ROOF ACCESS HATCH / SAFETY / LADDERS	14-15
GRAVITY VENTILATORS	16
POWERED VENTILATORS	17
LOUVERS	18
ROOF WALKWAY & HANDRAIL	19



### MATERIAL OPTIONS

We help you win bids by offering the right material for the job.

Bidding a highly competitive job?  
Galvanized steel will cut costs.

Need a 20 year weather-tightness warranty? Aluminum or Stainless Steel will help you secure the job.



### WEB RESOURCES

RSRoofproducts.com provides easy access to product information, submittal drawings, specifications and installation guides.

Use our online quote request form to tell us what you need and upload your project docs — come visit us today at [www.RSRoofproducts.com](http://www.RSRoofproducts.com)



### QUALITY CONTROL

We leverage strict practices in quality management throughout our fabrication process.

Each station inspects and approves production quality before continuing to the next phase.

We take pride in our work.



# HVAC Metal Building Roof Curb

Custom fabricated to fit any metal building roof panel make and model



Seam-to-seam Aluminum Curb with HVAC Partitions

## STANDARD PRODUCT FEATURES

- 0.080" Aluminum Construction Standard
- 8" Tall with 1" Insulation in Curb Wall (R-6.5)
- Pitch Corrected for a Level Top
- Seam-to-Seam Side Flanges are Standard
- Partitions for HVAC Systems as Specified
- Vibration Isolation Rails as Specified
- Custom Configurations Available Upon Request

**R**&S custom roof curbs fit any standing seam, R-panel or insulated panel roof system. Curbs are design to install under the panel on the upslope and over on the downslope. Sub-frame, sealants & fasteners supplied.

**Material:** 0.080" Aluminum is standard. Options for 18, 16 or 14 GA galvanized steel or stainless steel.

**Upslope:** Installs under the roof panel. Includes a formed water cricket and fixed / welded closures.

**Side Flanges:** Seam-to-seam side flanges extend to the next natural high to eliminate fasteners in the flat.

**Finish:** Standard mill finish. Options for powder coat or Kynar coat custom color finish.

**Engineering:** CAD drawings supplied with all orders. Structural calcs available upon request (fee-based).



Alum Curb with Layover Side Flanges and Damper Shelf



## ORDERING OPTIONS

- ☐ Vibration Isolation Rails as Specified
- ☐ HVAC Duct Partitions and Insulated Panels
- ☐ Damper Shelves for Exhaust Fans
- ☐ Collar-top "Square-to-Round" Transition
- ☐ Loose Panel Closures / Caps (Standard Flange)
- ☐ Vented Roof Curb Per RTU Specifications
- ☐ Powder or Kynar Coated Roof Curb



# HVAC Floating Metal Building Roof Curb

Floating two-curb system for heavy HVAC or RTU equipment on Standing Seam Roofs



## STANDARD PRODUCT FEATURES

- 1 INNER CURB**—14 GA inner structural curb with 3" base perimeter flange. Secures to structural members provided by building manufacturer. 14" high with 1" insulation typical (may customize).
- 2 OUTER CURB**—0.080" aluminum outer curb flashes to, and floats with the metal roof panel. 8" high is typical. Outer curb flashes to inner curb with counterflashing assembly provided by R&S.
- 3 PITCH CORRECTION**—Both inner and outer curbs are pitch corrected for a level top and uniform counter-flashing assembly. Curb height is based on upslope curb wall.
- 4 DUCT SUPPORTS & INSULATED PANELS**—HVAC partitions mechanically attached with pancake head fasteners prior to shipment. All submittals provided for review prior to fabrication.

## ORDERING OPTIONS

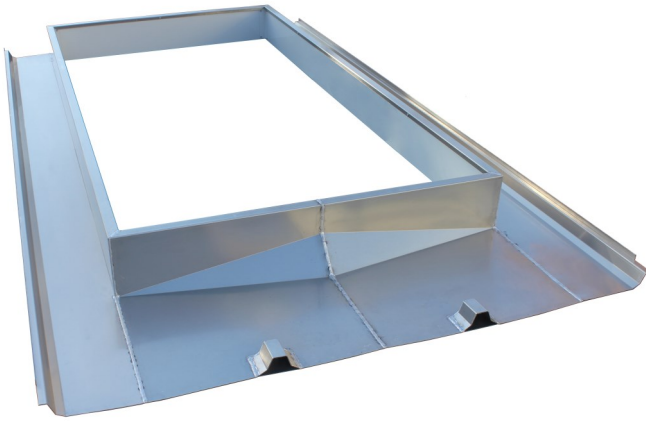
- ☐ Vibration Isolation Rails as Specified
- ☐ HVAC Duct Partitions and Insulated Panels
- ☐ Additional Structural Supports for Inner Curb
- ☐ Loose Panel Closures / Caps (Standard Flange)
- ☐ Powder or Kynar Coated Roof Curb
- ☐ Temporary Safety Covers to Address Fall Hazard
- ☐ Engineering Calcs Demonstrating Load Tolerance

## VIBRATION ISOLATION RAILS



# Skylight Metal Building Roof Curb

Custom fabricated and configured for all skylight sizes



## STANDARD PRODUCT FEATURES

- 0.080" Aluminum Construction Standard
- 6" Tall with 1" Insulation in Curb Wall (R-6.5)
- Interior White Liner (Trim)
- Seam-to-Seam Side Flanges are Standard
- Integrated Fall Protection Screen
- Kits Include Backer-Channel, Fasteners & Sealants
- Custom Configurations Available Upon Request

**S** skylight roof curbs are configured to optimize daylight performance. Provisions include fall protection screens, interior white liners and non-pitched 6" high curb walls to minimize daylight loss due to the well factor.

**Material:** 0.080" Aluminum is standard. Options for 18 GA galvanized steel or stainless steel.

**Inner Curb Liner:** 26 GA white galvalume liner mounts to the curb's top flange and over the insulation.

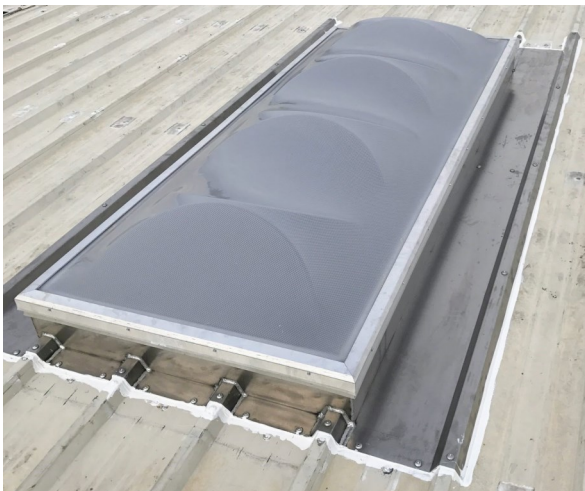
**Side Flanges:** Seam-to-seam side flanges extend to the next natural high to eliminate fasteners in the flat.

**Finish:** Standard mill finish. Options for powder coat or Kynar coat custom color finish.

**Engineering:** CAD drawings supplied with all orders.



R&S Double Dome Skylight on Seam Clip Curb



## ORDERING OPTIONS

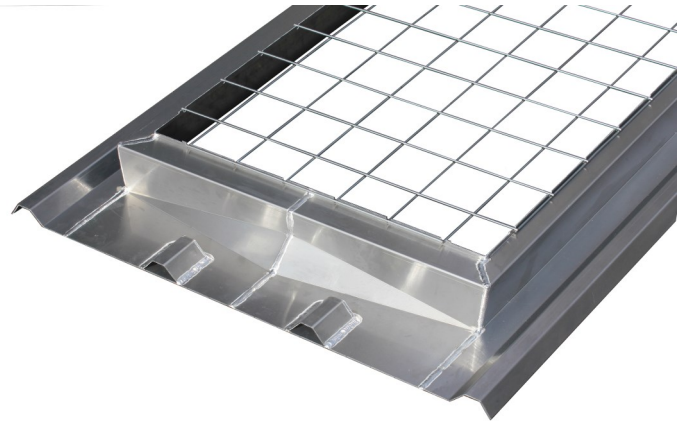
- ☐ Loose Panel Closures / Caps (Standard Flange)
- ☐ Customized to Meet Warranty Requirements
- ☐ Galvanized Steel Construction
- ☐ Louvered Roof Curb for Ventilation
- ☐ Fall Protection Screen or Security Bars
- ☐ Powder or Kynar Coated Roof Curb

# Curb Mount Fall Protection Screen

OSHA-compliant welded galvanized steel screen and all required installation hardware

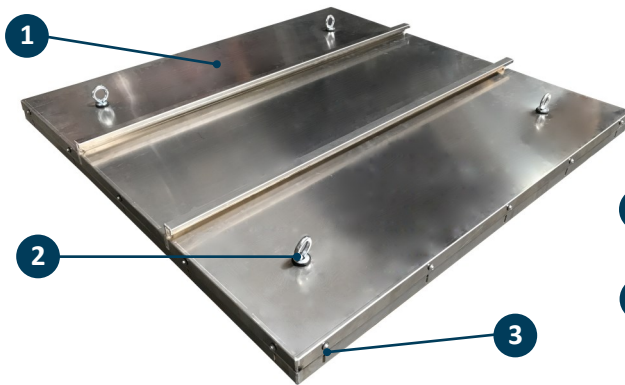
## STANDARD PRODUCT FEATURES

- 0.162" Thick Screen at 4" x 4" Max Openings
  - OSHA-Compliant to CFR 1910.23 and 1926.501
  - Installs Beneath Skylight Dome
  - May be Installed as Retrofit or Included with Curb
- ★ **Compatible with Any R&S Skylight Curb or R&S Daylighting Smoke Ventilator**



## Industrial Lids

Removeable lids for accessing large equipment from the roof top



## STANDARD PRODUCT FEATURES

- 1 LID EXTERIOR**—0.040" aluminum top sheeting with seams 18" O.C. rigid with aesthetic appeal.
- 2 LIFTING LUGS**—Corrosion resistant lifting eyebolts secured to the lid perimeter. The quantity of lifting lugs is determined by lid size.
- 3 MOUNTING SLOTS**—Factory located slots on the side of lid walls for mounting bolts (provided).
- 4 EPDM BULB GASKET**—Factory mounted to underside of lid perimeter for weathertight seal.
- 5 INSULATION**—1" (R-6.5) insulation concealed aluminum liner. Higher R-Value available.

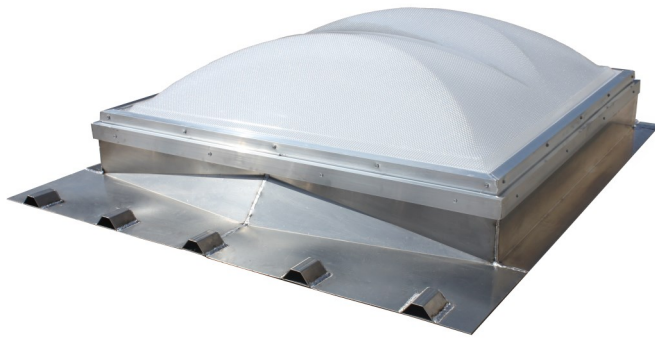
Maximum Lid Size is 10' x 20'

MODEL	LID SIZE	~WEIGHT (1" INSULATED)
LID-4848	4' x 4'	150 LBS
LID-6060	6' x 6'	300 LBS
LID-9696	8' x 8'	550 LBS
LID-120120	10' x 10'	850 LBS
LID-120180	10' x 15'	1,275 LBS



# Curb Mount Skylight

Meets daylighting requirements for low-rise industrial and retail building projects



MODEL	VLT	U-FACTOR	SHGC
RS STANDARD	70%	0.65	0.50
RS ENERGY CODE	58%	0.44	0.22

## STANDARD PRODUCT FEATURES

- Impact Modified Prismatic Glazing
- Thermally Broken Aluminum Frame
- Oversized Condensate Gutter
- Parabolic Arched Shape for Maximum Strength
- Energy Code Compliant when Specified
- Curb Mount, Metal Building or Self-Flushed

**R**&S skylights maximize the daylighting potential of any low-rise commercial or retail space. Metal building package includes an insulated curb, fall protection screen, well trim, & sealants/fasteners for installation.

**Glazing:** 100% impact modified prismatic glazing with 70% visible light and 100% diffusion for balanced light.

**Frame:** 100% thermally-broken frame resists condensation. Condensate gutter for moisture collection.

**Custom Roof Curb:** Aluminum construction is typical, fabricated to fit any metal building roof panel.

**Fall Protection:** 0.162" galvanized fall protection screen. Meets OSHA CFR 1910.23 and 1926.501

**Miami-Dade / FM Rated:** Polycarbonate skylights carry a Miami-Dade / FM rating when specified.

## Standard Sizes—Custom Sizes Available

MODEL	INSIDE CURB OPENING	MODEL	INSIDE CURB OPENING
4848	48" x 48"	2460	24" x 60"
4896	48" x 96"	24120	24" x 120"
3696	36" x 96"	3260	32" x 60"
36120	36" x 120"	32120	32" x 120"

## ORDERING OPTIONS

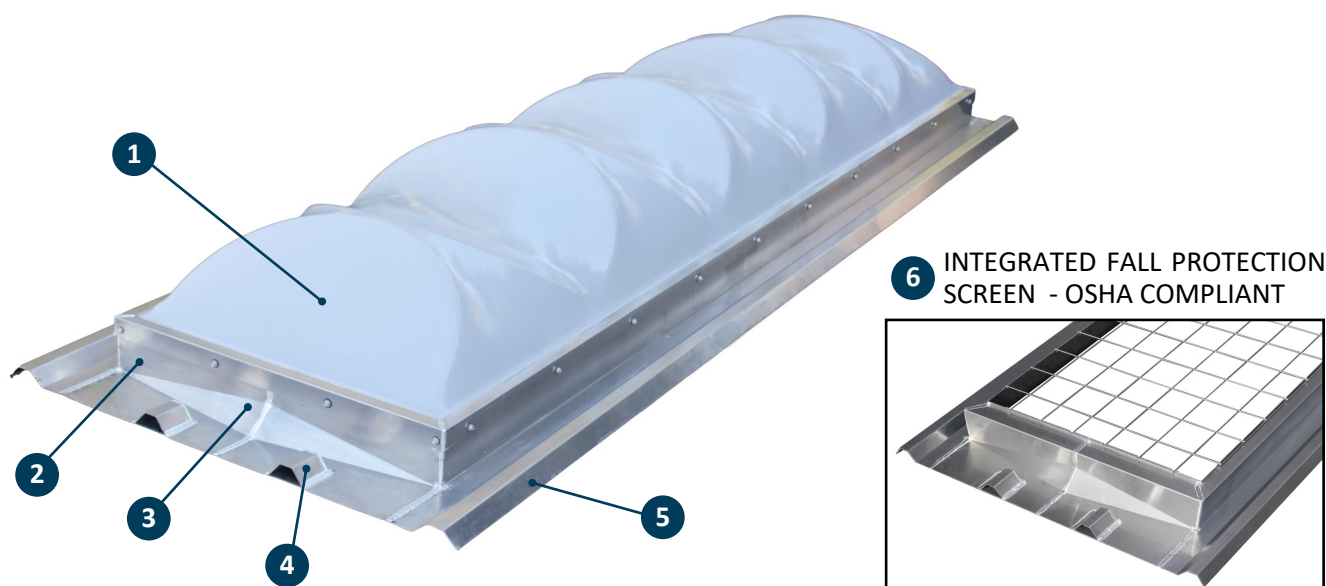
- ☐ Fall Protection Screen and Mounting Hardware
- ☐ Security Bars—White Powder Coat Typical
- ☐ Roof Curb for Metal Building or Built-up Roof
- ☐ Louvered Roof Curb for Ventilation
- ☐ Powder or Kynar Coated Roof Curb





# RS36 Skyline | For 12" O.C. High-Rib Roof

★ Safety & performance at a lower installed cost vs standard skylight and safety screen alternatives



## STANDARD PRODUCT FEATURES

All kits ship complete and installation ready!

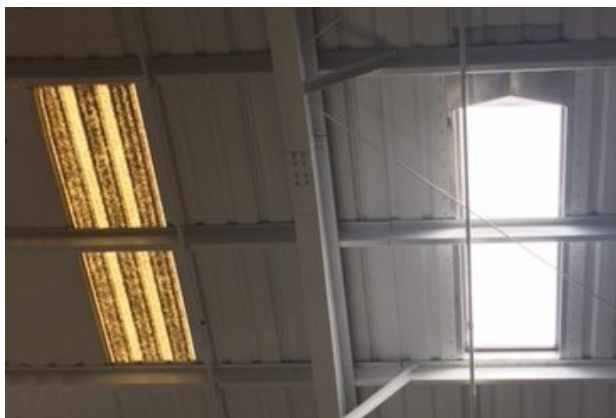
- 1 GLAZING**—White prismatic glazing achieves 70% visible light with 100% diffusion for balanced interior daylighting. Optional double dome.
- 2 RS36 BASE**—0.080" Aluminum for maximum strength and reduced weight (65 LBS). Heavy gauge aluminum retainer cap seals dome to base.
- 3 WATER CRICKET**—Formed cricket provides ample watershed while preventing material from gathering behind the cricket.
- 4 CUSTOM FIT CONTOURS**—Fits the profile of any 12" O.C. high-rib roof system. Contours are factory welded and install similar to panel.
- 5 LAYOVER SIDE FLANGES**—Fits any 12" O.C. high-rib roof system. Kits include all mastic, sealant and fasteners required for installation.
- 6 FALL PROTECTION**—Safety screen comes standard and is factory-installed. OSHA CFR 1910.23 and 1926.501.

## KEY BENEFITS

Typical Aged LTP

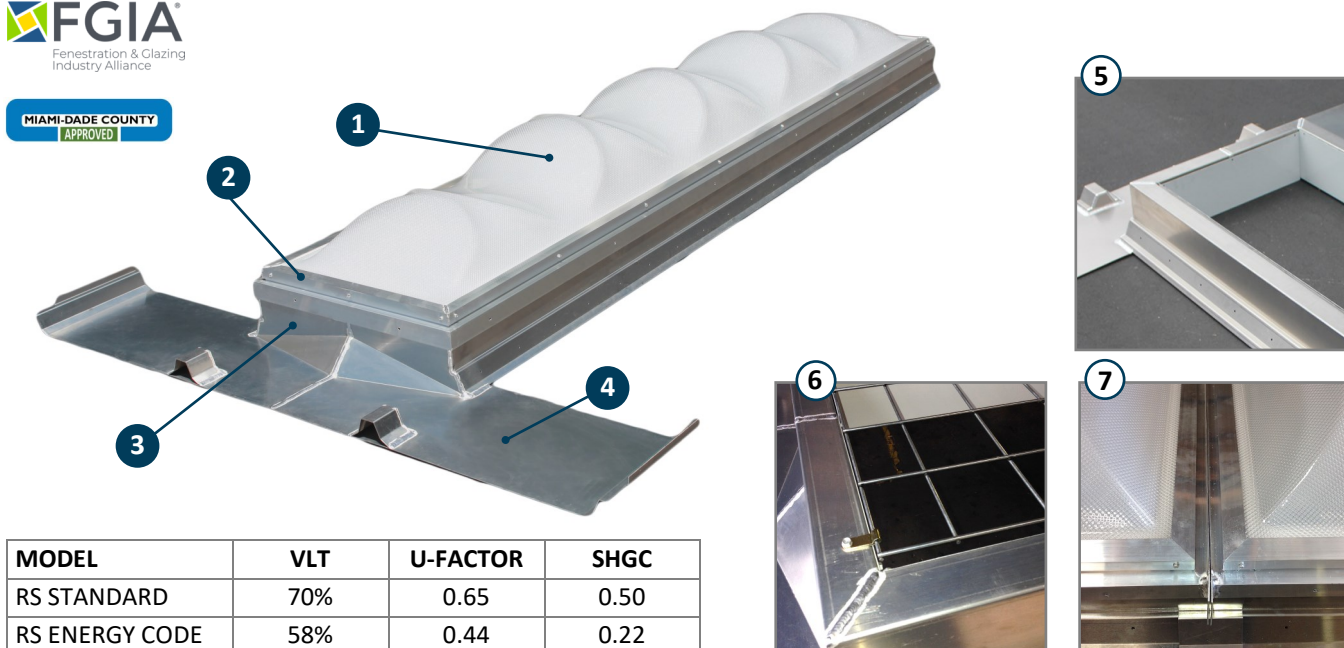
RS36 Skyline Series

- 10'-4" Long, Intended to Replace Typical LTP Skylight
- UV Additive Resists Yellowing from Sun Exposure
- Includes Factory-Installed OSHA Fall Protection Screen
- No Sub-Frame or Backer-Channel Required
- Installs Quickly, Similar to a Single Roof Panel
- Perfect for Retrofit or New Construction—Ag, Manufacturing, Warehouse, Auto Shops, and More



# RS24 Skylight for 24" Trapezoidal Standing Seam

High performance daylighting system for low-rise industrial and retail building projects



MODEL	VLT	U-FACTOR	SHGC
RS STANDARD	70%	0.65	0.50
RS ENERGY CODE	58%	0.44	0.22

## STANDARD PRODUCT FEATURES

All kits ship complete and installation ready!

- 1 GLAZING**—Double prismatic glazing with 70% visible light & 100% diffusion for balanced lighting. Optional multi-wall insert for energy code.
- 2 THERMALLY BROKEN FRAME**—Poured-and-debrided to resist thermal transmission. Integral gutter traps and evaporates interior moisture.
- 3 RS24 BASE**—0.080" aluminum with side flanges formed to fit panel profile. Compatible with any 24" O.C. Trapezoidal Standing Seam roof.
- 4 WATERSHED**—Patented diverter installs under the panel on the upslope, secures to seam with seam cap for 8" upslope clearance for watershed.
- 5 INSULATION & LINER**—2" R-13.5 insulation on curb walls. White trim for a clean and polished skylight that boosts natural lighting properties.
- 6 FALL PROTECTION**—Mounts under the dome assembly. Kits ship with all required hardware. Meets OSHA CFR 1910.23 and 1926.501 standards.
- 7 SEQUENCING**—May sequence in 5' or 10' sections for a continuous daylight strip. Delivers more daylight per opening for cost savings.
- 8 ENERGY CODE COMPLIANCE**—May be equipped with a multi-wall polycarbonate panel that meets the most stringent skylight energy codes.

## KEY BENEFITS

- Single Base Design Installs in 1 Hour or Less!
- Installs Between Purlins, Floats with Standing Seam Roof
- UV Additive in Plastic Resists Yellowing from Sun Exposure
- Includes OSHA-Compliant Fall Protection Screen
- Perfect for Retrofit or New Construction—Ag, Manufacturing, Warehouse, Auto Shops, and More

MODEL	INSIDE CURB OPENING
RS24-10	2' x 10'
RS24-20	2' x 20'
RS24-30	2' x 30'
RS24-40	2' x 40'



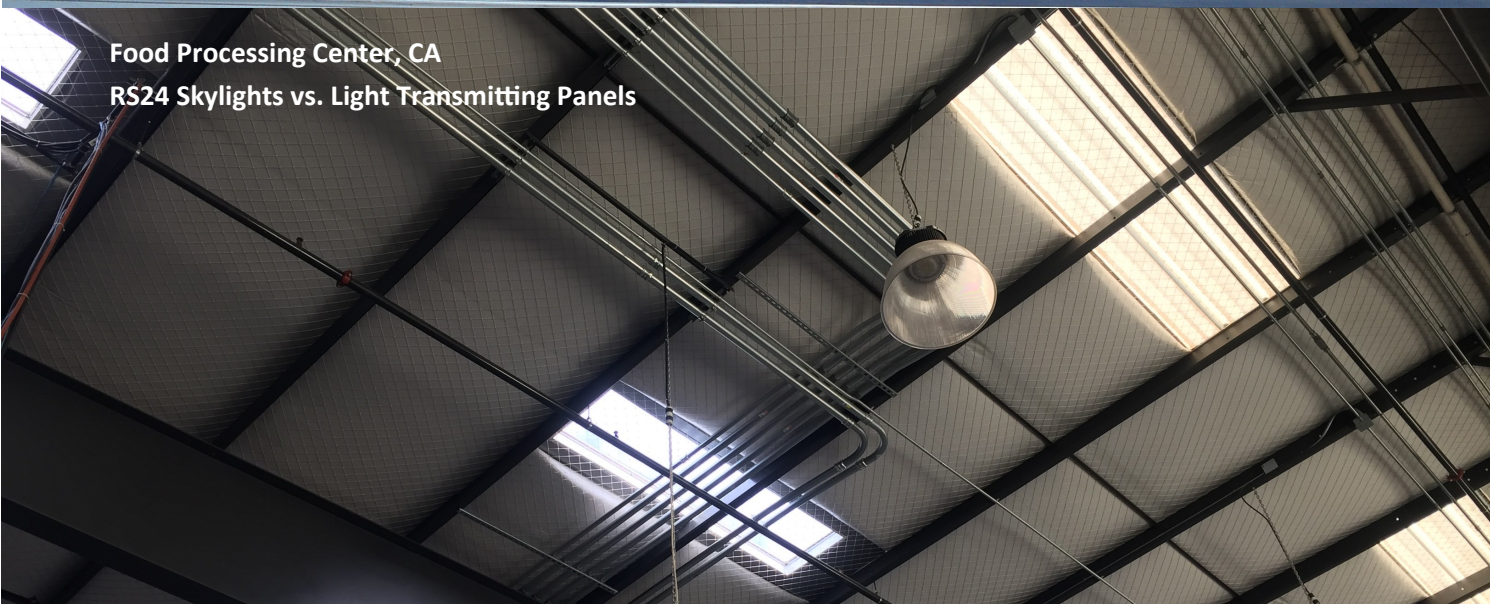
Butte County Maintenance Facility, CA  
QTY (16) RS24 Skylights



Kongskilde Industries Warehouse, IL  
QTY (65) RS24 Skylights



Food Processing Center, CA  
RS24 Skylights vs. Light Transmitting Panels



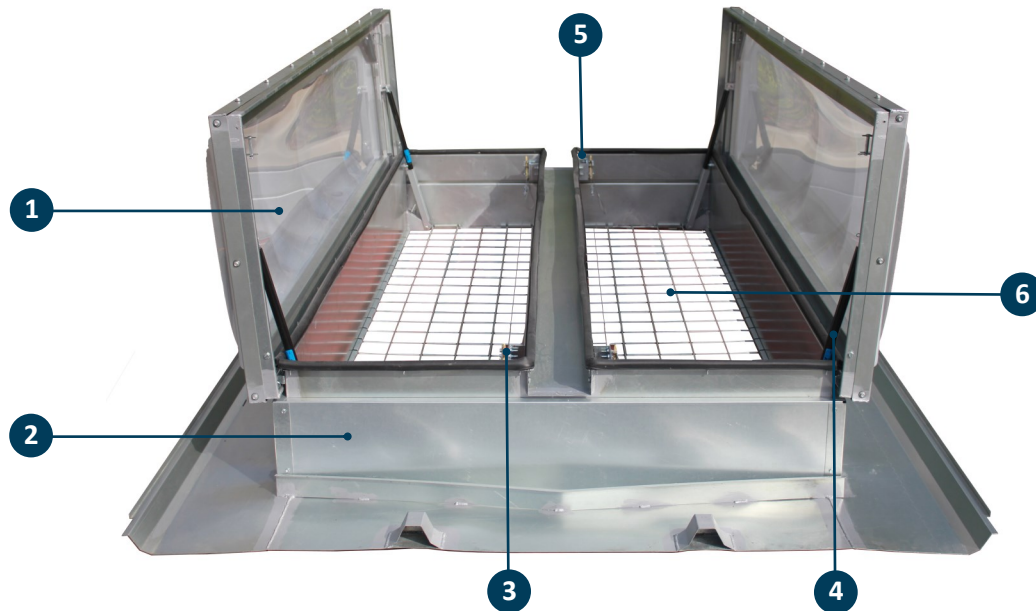
Daylighting

[www.RSRoofproducts.com](http://www.RSRoofproducts.com)



# ExoVent™ Solar | Daylight Smoke Vent

UL 793 rated smoke vent with daylighting lids



## STANDARD PRODUCT FEATURES

- 1 GLAZING**—White polycarbonate outer dome over clear inner dome. Features full perimeter dome caps and interior condensate provisions.
- 2 CURB**—0.080" aluminum with 1" insulation and liner. Curb height 12". Base flanges: metal building, curb mount or self-flashing.
- 3 UL FUSIBLE LINKS (2)**—Heat activated fusible links standard. Options: (F)165, 212, 286, 370, 520. Interior & exterior manual release provisions.
- 4 GAS SPRINGS (4)**—Low spring rate nitrogen gas springs for smooth operation. Lids open against a 10 PSF . High capacity for snow loads available.
- 5 LATCHES**—12 GA latches engineered for a 90 PSF uplift. Zinc plated / stainless steel hardware. Factory-installed and calibrated.
- 6 FALL PROTECTION**—Optional fall protection screen factory-installed. OSHA-compliant with optional security bars also available.

## ORDERING OPTIONS

- ☐ Single Dome Glazing for Cost Savings
- ☐ High Capacity for High Load Conditions
- ☐ Galvanized Steel Construction
- ☐ McCabe Resettable Release Link
- ☐ Powder Coat or Kynar Custom Color Finish
- ☐ Fall Protection Screen (OSHA-Compliant)
- ☐ Security Bars
- ☐ Sub-Frame, Sealants & Fasteners

MODEL	INSIDE CLEAR OPENING	WEIGHT (ALUMINUM)	WEIGHT (GALV STEEL)
ULSH-4848	48" x 48"	110 LBS	170 LBS
ULSH-4896	48" x 96"	170 LBS	260 LBS
ULSH-6060	60" x 60"	145 LBS	220 LBS
ULSH-6072	60" x 72"	150 LBS	230 LBS
ULSH-6096	60" x 96"	205 LBS	310 LBS

# ExoVent™ | Solid Lid Smoke Vent

UL 793 rated smoke vent with insulated solid galvanized or aluminum lids

## STANDARD PRODUCT FEATURES

- Same as Daylighting Model but with Solid Lid
- 1" Lid Insulation with Interior Liner

## ORDERING OPTIONS

- ☐ High Load or Uplift Capacity
- ☐ Galvanized Steel Construction
- ☐ McCabe Resettable Release Link
- ☐ Powder Coat or Kynar Custom Color Finish
- ☐ Fall Protection Screen or Security Bars
- ☐ Sub-Frame, Sealants & Fasteners



# ExoVent™ Cold | Cold Storage Smoke Vent

Smoke vents specifically designed for cold storage facilities

## STANDARD PRODUCT FEATURES

- 6" R 39 Thermally Broken Smoke Vent
- Aluminum Construction
- UL Listed Fusible or Resettable McCabe® Links
- High Performance Gas Springs
- Custom Latching System with Release
- Opens Against 10 PSF Live Load
- Lids Remain Closed Under 90 PSF Uplift

## ORDERING OPTIONS

- ☐ Galvanized Steel Curb for Cost Reduction
- ☐ Powder Coat or Kynar Custom Color Finish
- ☐ Fall Protection Screen or Security Bars
- ☐ Sub-Frame, Sealants & Fasteners



MODEL	INSIDE CLEAR OPENING	WEIGHT (ALUMINUM)	WEIGHT (GALV STEEL)
CSSH-6060	60" x 60"	600 LBS	800 LBS
CSSH-6072	60" x 72"	665 LBS	900 LBS
CSSH-6090	60" x 90"	770 LBS	1000 LBS
CSSH-6096	60" x 96"	800 LBS	1100 LBS

# Metal Building Roof Access Hatch

Provides safe roof access via interior fixed ladder or ship stair system



## STANDARD PRODUCT FEATURES

- Welded Closures and Caps Nest with Any Metal Panel
- Insulated Curb Wall and Lid for Energy Efficiency
- Heavy Duty EPDM Bulb Gasket for Weathertightness
- Hold Open Arm Locks Hatch in Open Position
- Inside and Outside Manual Release Provisions
- High Performance Gas Springs for Smooth Operation
- Fully Welded Cover and Curb

**R**oof Hatches provides safe roof access via interior fixed ladder or ship stair system. Metal building flanges nest with any standing seam or R-Panel roof system and may be fabricated of aluminum or steel.

**Curb:** 0.125" integral aluminum curb stands 12" high. 1" rigid insulation (R 6.5) in curb walls and lid.

**Cover:** 0.125" aluminum cover with 1" ridged insulation and 0.040" interior liner. EPDM rubber gasket.

**Gas Springs:** Low spring rate nitrogen gas springs for smooth operation. Opens against a 40 PSF live load.

**Latches:** 12 GA slam latch rated for a 30 PSF uplift. Inside grasp handle and padlock hasp.

**Finish:** Standard mill finish. Options for powder coat or Kynar coat custom color finish.



Aluminum Access Hatch with Seam Clip Flanges

## Standard Sizes—Custom Sizes Available

MODEL	INSIDE CLEAR OPENING	~WEIGHT (ALUMINUM)	WEIGHT (STEEL)
RAH-3036	2'-6" x 3'-0"	145 LBS	190 LBS
RAH-3048	2'-6" x 4'-0"	175 LBS	200 LBS
RAH-3096	2'-6" x 8'-0"	165 LBS	220 LBS
RAH-3636	3'-0" x 3'-0"	150 LBS	200 LBS
RAH-4848	4'-0" x 4'-0"	165 LBS	220 LBS

## ORDERING OPTIONS

- ☐ Skylight Dome Lid for Daylighting
- ☐ Stainless Steel Hardware
- ☐ 14 GA Galvanized Steel Construction
- ☐ Pitch Corrected Top
- ☐ Loose Panel Closures / Caps (Standard Flange)
- ☐ Powder Coat or Kynar Custom Color Finish



# Roof Access Hatch Accessories

Safety products compatible with R&S Roof Access Hatches

## KEEHATCH® SAFETY RAILING

### STANDARD PRODUCT FEATURES



- 1.625" O.D. Aluminum Pipe Railing
- Sized to Fit Roof Hatch Dimension
- Two Rails per Side with Self-Closing Gate
- Mill or Safety Yellow Finish
- Includes Corner Brackets to Fit Any R&S Hatch
- Compliant with OSHA Standards #1910.23 & #1910.27

## LADDER SAFETY POST

### STANDARD PRODUCT FEATURES



- Constant Force Spring Balance Enables Controlled Operation
- Indexing Pull Pin Locks at Fully Raised and Lowered Positions
- Durable Powder Coat Finish in Safety Yellow
- 42" Extension Beyond Outer Tube
- Mounting U-Bolts Adjustable for 12" O.C. Rungs
- In Stock Item Generally Ships within 24 Hours

## FIXED ROOF ACCESS LADDERS

### STANDARD PRODUCT FEATURES



- Heavy Duty One-piece Welded Assemblies
- 16" Wide, Custom Heights to Meet Requirements
- Stand-off Brackets are 7" (other options available)
- 11 Stock Powder Coat Color Options
- Stainless Steel and Hot Dip Galvanized Coating Available
- Standard Fixed Ladder, Walk-Thru Handrails, Safety Cages, Boarding Rails, Standoff Platforms
- All Products Quoted Meet OSHA Guidelines

# Continuous Ridge Ventilator

Customized ventilation systems engineered to achieve the number of required air changes



MODEL	THROAT	HEIGHT	TOP WIDTH	BASE WIDTH
RV-9	9"	14"	21-1/4"	28"
RV-12	12"	18-1/8"	28-1/4"	32-1/2"
RV-18	18"	28-1/2"	41"	48"
RV-24	24"	37-1/2"	54-1/4"	64"

## STANDARD PRODUCT FEATURES

- Galvalume or Aluminum Construction
- Damper Kits & Extended Chain Operators
- 1/2" Mesh Galvanized Bird Screen
- Variable Pitch Up to 6:12
- 10' Length Low Profile
- Single or Continuous Applications
- Pre-Finished Off-White Galvalume Steel

## ORDERING OPTIONS

- Galvalume or Custom Color Finish
- Lever Damper Operator
- Boat Winch Damper Operator
- Electronic Actuated Damper Operator

# Spot Gravity Vents

Cost effective gravity intake or exhaust engineered for the PEMB industry



## VARIOUS GRAVITY VENT OPTIONS

- 1 ST Hooded Vent:** Throat area between 1— 40 square feet in various length and width combinations. 1/2" bird screen. Integral base nests with metal panel or roof curb. Aluminum or Galvanized Steel. Mill, powder coat or Kynar custom finish.
- 2 RS Round Vent:** For gravity intake or relief ventilation. Throat diameter of 6" - 36" with optional pivoting disc damper and pull chain. 1/2" bird screen. Mill, powder coat or Kynar custom finish.
- 3 Turbine Vent:** Versatile ventilation where spot gravity exhaust is needed. Reinforced, corrugated vanes harness wind and natural air flow to accelerate relief. Throat diameter of 6" - 36". 1/2" bird screen when specified. Mill, powder

# Powered Ventilators

Comprehensive array of Greenheck roof and wall fans for industrial applications



★ **R&S ENGINEERING SERVICES:** Our Estimating Team can assist by running air movement calculations considering building dimensions and usage to ensure adequate make-up and exhaust performance.

## ROOF DOWNBLAST FANS



Centrifugal Roof Exhaust Fans include both direct and belt driven fans with backward inclined centrifugal wheels. The fans feature double studded isolators for true

vibration isolation. The fans are a downblast configuration and are suitable for roof mounted applications exhausting relatively clean air.

## ROOF UPBLAST FANS



Centrifugal Roof Upblast exhaust fans include both direct and belt drive options with efficient backward inclined centrifugal wheels and aerodynamic inlet cone minimizing

system effects. The motors on the fans are out of the airstream. Suitable for applications ranging from storage room to fume hood exhaust and kitchen grease exhaust to smoke control.

## ROOF TUBE AXIAL FANS



Axial fans are a lower cost option for low/medium pressure applications. Roof mounted models are designed to discharge clean air or fume exhaust up and away from the

building. Typical uses are industrial spaces warehouses, fume exhaust, and paint booth exhaust.

## ROOF PROPELLER EXHAUST & SUPPLY FANS



Hooded Propeller Roof Fans include both direct and belt driven fans with fabricated steel, fabricated aluminum or cast aluminum blades.

These fans are suitable for clean air applications including exhaust, supply or filtered supply. Typical applications are factories and warehouses.

## WALL PROPELLER FANS



Wall Propeller Fans include both direct and belt driven fans with fabricated steel, aluminum, or cast aluminum blades. These wall fans are

suitable for clean air applications, including exhaust, supply, or filtered supply. Reversible fans are available with cast aluminum blades. Typical applications are factories and warehouses.

## WALL EXHAUST FANS



Wall Exhaust Fans include both direct and belt driven fans with backward inclined centrifugal wheels. The motors are out of the airstream. The fans are suitable for sidewall applications.



# Formed Louvers

Designed to achieve high free area, low pressure drop and low water penetration

**Frame:** 18 GA Galvanized Steel or 0.080" Aluminum.

**Blades:** 18 GA Galvanized Steel or 0.080" Aluminum.

**Flashing:** Recessed perimeter flange set to metal panel depth, includes drip lip, jamb, and sill flanges.

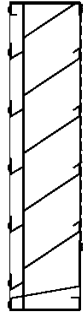
**Assembly:** Riveted and/or welded as specified.

**Birdscreen:** 1/2" Mesh x 19 GA galvanized steel.

**Finish:** Electrostatically applied powder paint, oven-baked finish. Options for mill or Kynar coat.

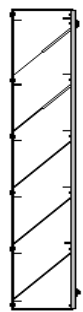
**Options:** Insect screen, aluminum screen, filter racks, insulated blank-off panels, gable or round shaped. Custom applications available upon request.

## DRAINABLE BLADE LOUVER



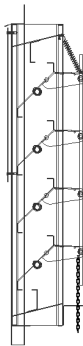
- Licensed to Bear AMCA Seal for Air and Water Performance
- Drain Gutters in Each Blade and Jamb Downspouts
- Angled Bottom Sill with Integral Water Stop
- 4" deep, 37.5° Angle Blade, 3-3/8" On Center
- Available in 2", 4" or 6" Louver Depth (4" AMCA Certified)
- Minimum Size: 12" x 12", Maximum Panel Size: 96" x 96"
- Louvers Larger Than Maximum Are Sequenced with Mullions

## STRAIGHT BLADE LOUVER



- Lower Cost Option Straight Blade Design
- 4" deep, 42° Angle Blade, 4-1/2" On Center
- Available in 2", 4" or 6" Louver Depth
- Minimum Size: 12" x 12", Maximum Panel Size: 96" x 96"
- Louvers Larger Than Maximum Are Sequenced with Mullions

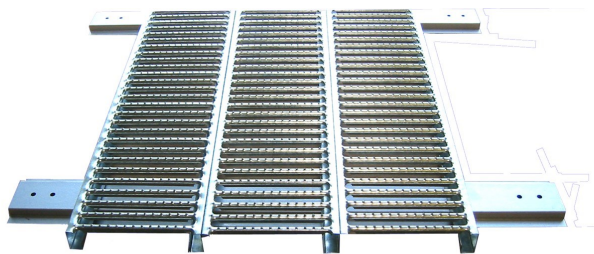
## ADJUSTABLE BLADE LOUVER



- Adjustable Blades May be Closed When Required
- Blades Operate with Pull Chain or Motorized Actuator
- 4" deep, 40° Angle Blade, 4-1/2" On Center
- Minimum Size: 12" x 12", Maximum Panel Size: 60" x 96"
- Louvers Larger Than Maximum Are Sequenced with Mullions
- Optional Stainless Steel Jamb Seals

# GrateSafe® Metal Rooftop Walkway & Handrail

Safe access to rooftop equipment while eliminating damage to roof panels from foot traffic



## STANDARD PRODUCT FEATURES

- 18 GA Weather Resistant Anti-Skid Surface
- Planks 10' Long x 12" Wide x 2-1/2" High
- Versatile Interlocking Plank Design
- 14 GA Supports, Ledgers, Splice Plates
- S-5! Clamps for Standing Seam Roofs
- Fab-Lok Fasteners for Screw Down Roofs
- Custom Widths—Increments of 12"
- CAD Drawings of Walkway & Handrail

UNRESTRICTED SUPPORTS	4'0"	5'0"	6'0"	7'0"
MAX CONCENTRATED LOAD	529	501	420	362
DEFLECTION (INCHES)	0.12	0.22	0.31	0.43
MAX UNIFORM DIST LOAD	312	200	140	103
DEFLECTION (INCHES)	0.17	0.27	0.39	0.54

**O**ur engineering team will design a walkway layout to meet the requirements of any project. Orders include CAD drawings of walkway layout including supports, mounting hardware, handrail fittings and crossovers.

**Planking:** 18 GA pierced and punched anti-skid surface. Interlocking plank design for customized walkway widths.

**Supports:** 14 GA galvanized steel hat-channels, m-channels, plank splice plates, ledgers as specified in plans.

**Handrailing:** Schedule 40 galvanized steel pipe. Can include custom color finish or safety yellow powder coat.

**Handrail Fittings:** Industrial strength aluminum handrail fittings mount to walkway supports with doubler brackets.

**Mounting Hardware:** S-5!® Clamps, M-washers, Longlife bolts, nuts and self-drillers as specified in walkway layout.



## ORDERING OPTIONS

- ☐ Pitch-Corrected Walking Surface
- ☐ 6" High Toe Kick Board
- ☐ Handrailing on One or Both Sides of Walkway
- ☐ Cross-over Stairs or Ladder Systems
- ☐ Swinging Access Gate for Entry Point(s)
- ☐ Powder Coated Safety Railing (Yellow)
- ☐ Landing areas, mechanical platforms
- ☐ Engineering Calculations, Stamped Submittals





## CONSULTING | SALES | SUPPORT

Since 1964, R&S has supplied the Metal Building industry with high quality accessories customized to meet the special needs of the pre-engineered building contractor.

Our manufacturing employs the latest in modern metal working machinery and software, and products conforming with the highest recognized standards in the industry.

Quality and value remain our most important promises to our customers.

## Get IN TOUCH



805.375.3980



630 Todd Ln., Unit B  
Santa Paula, CA 93060



[sales@RSRoofproducts.com](mailto:sales@RSRoofproducts.com)

