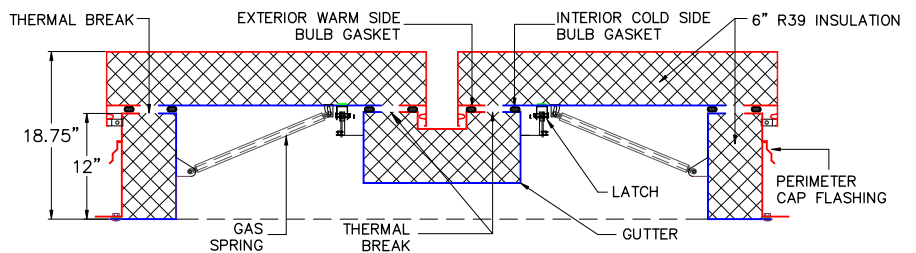
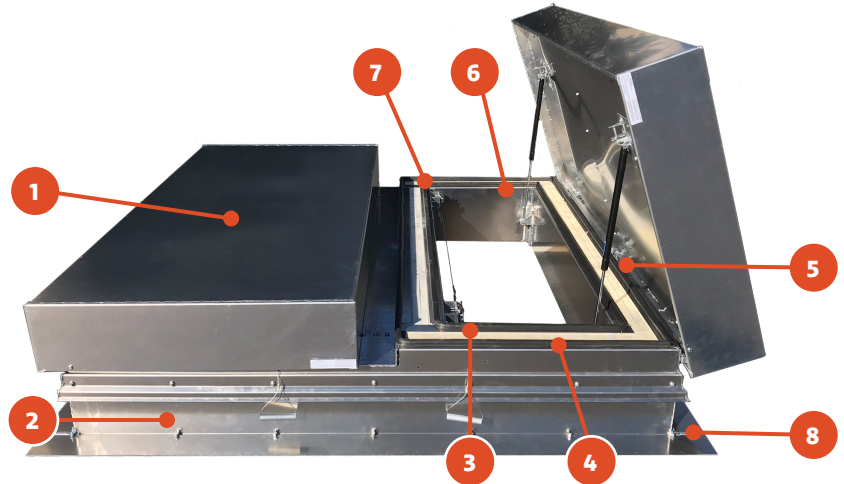


ExoVent™ Cold

HEAT & SMOKE VENTILATOR FOR COLD STORAGE FACILITIES

ExoVent™ Cold Storage Smoke Vents are engineered with 6" polyiso insulation and a complete thermally broken design. This design ensures minimal thermal loss in cold warehouses and freezer environments. The base flanges are customizable to fit any insulated metal panel roof system or conventional build-up configuration.

- R-39 Thermally Broken Smoke Vent
- UL Fusible Links Open at Preset Temp
- High Performance Gas Springs
- Durable Latching System with Release
- Two Rows of EPDM Bulb Gasket



STANDARD PRODUCT FEATURES

- LID** – 0.080" aluminum reinforced lid with 6" polyiso insulation and liner. Engineered to withstand a 40 PSF live load. Uplift 30 PSF.
- CURB** – 12" high thermally broken curb system with 6" polyiso insulation. Constructed of 0.125" aluminum or 14 GA galvanized steel.
- FIRE LINKS** – Heat activated UL listed fusible links. Options (F°): 165°, 212°, 286°, 370°, 520°. Interior and exterior manual releases.
- GASKETS** – High-quality extruded EPDM bulb gasket secured to the entire perimeter of the curb opening. Two rows for complete seal.
- SPRINGS** – Low spring rate nitrogen gas springs for controlled operation. Lids open against a 10 PSF snow load.
- HOLD OPEN** – Aluminum or steel automatic hold open channel locks doors in an open position.
- LATCHES** – 12 GA mechanical latches engineered for a 90 PSF uplift. Material options include zinc plated or stainless-steel. Adjustable latch position for a weathertight seal.
- CAP FLASHING** – For flashing to conventional roof systems. Used as attachment point when lifting vents to the roof.

ORDERING OPTIONS

- Aluminum or Galvanized Steel Construction
- McCabe® Resettable Electronic Release Link
- Powder Coat or Kynar Custom Color Finish
- Fall Protection Screen or Security Bars
- Heat Trace at Curb Opening
- Base: Metal Building, Self-Flashed, Curb Mount

STANDARD SIZES

Model	Inside Clear Opening
DLSH-Hi R-6060	60" x 60"
DLSH-Hi R-6072	60" x 72"
DLSH-Hi R-6090	60" X 90"
DLSH-Hi R-6096	60" x 96"