

# SAFESCREEN LTP FALL PROTECTION INSTALLATION GUIDE (P.1)



FOR 12" O.C. HIGH-RIB ROOF SYSTEMS



**WARNING: DO NOT PLACE BODYWEIGHT ON LTP SKYLIGHT DURING INSTALLATION. USE CAUTION WHEN INSTALLING SAFETY SCREENS.**

## STEP 1: PREP DRILL HOLES (FIG 1)

PLACE QTY (6) 6" STRIP OF MASTIC TAPE WHERE PURLINS INTERSECT RIB HIGHS.

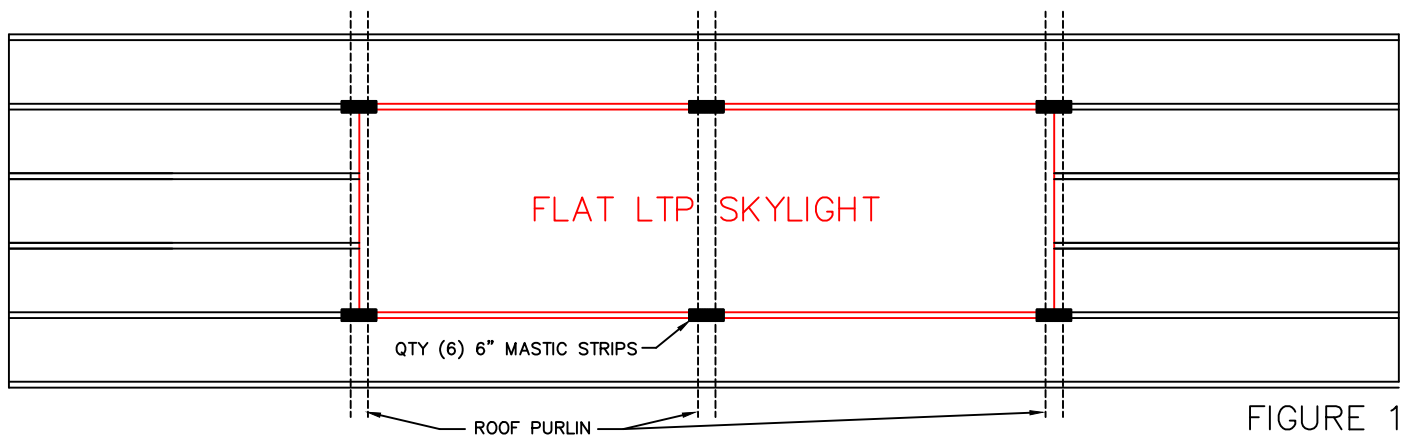


FIGURE 1

## STEP 2: POSITION CHANNELS (FIG 2)

CENTER LONG SLOTTED CHANNELS SUCH THAT EQUAL AMOUNTS EXTEND PAST SKYLIGHT ON BOTH ENDS. POSITION SHORT SLOTTED CHANNELS DIRECTLY OVER THE ROOF PURLINS. DO NOT ATTACH TO ROOF PANEL YET.

**NOTE: IF PURLIN SPACING IS LESS THAN 60" O.C. THE SLOTTED VERTICAL LEG OF THE LONG CHANNEL MUST BE FIELD NOTCHED TO ACCEPT SHORT CHANNELS.**

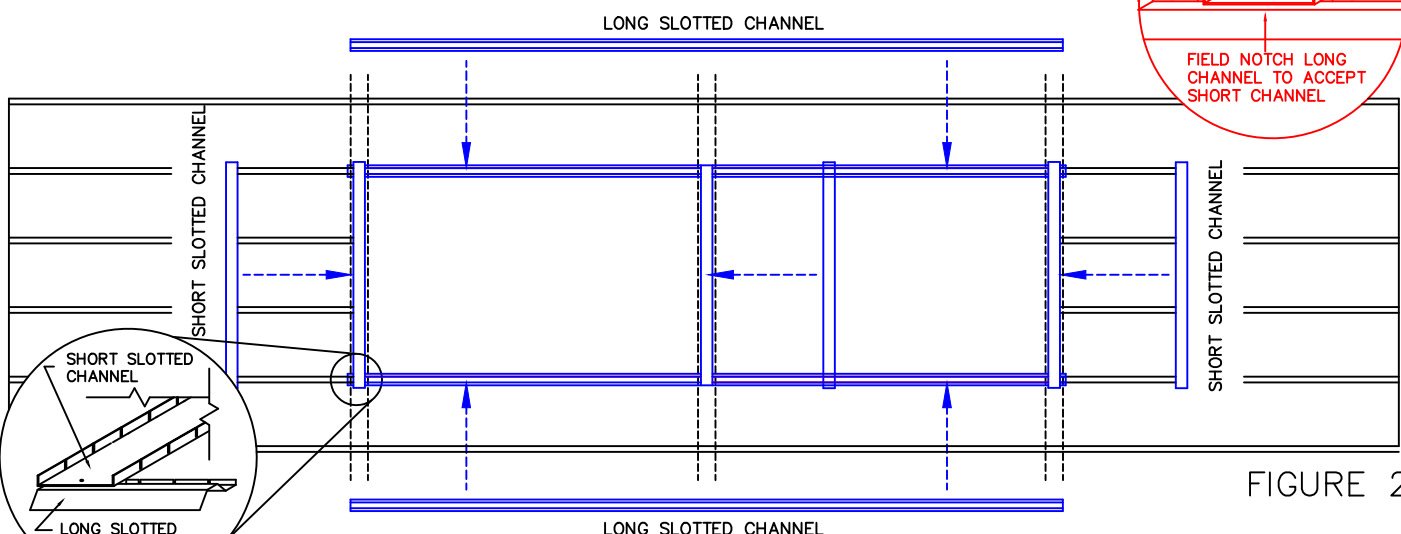


FIGURE 2

# SAFESCREEN LTP FALL PROTECTION INSTALLATION GUIDE (P.2)



FOR 12" O.C. HIGH-RIB ROOF SYSTEMS



**WARNING: DO NOT PLACE BODYWEIGHT ON LTP SKYLIGHT DURING INSTALLATION. USE CAUTION WHEN INSTALLING SAFETY SCREENS.**

## STEP 3: SECURE CHANNELS (FIG 3)

SECURE LONG SLOTTED CHANNELS & SHORT SLOTTED CHANNELS TO PURLINS WITH 4" SELF-DRILLING FASTENERS. DO NOT TIGHTEN COMPLETELY.

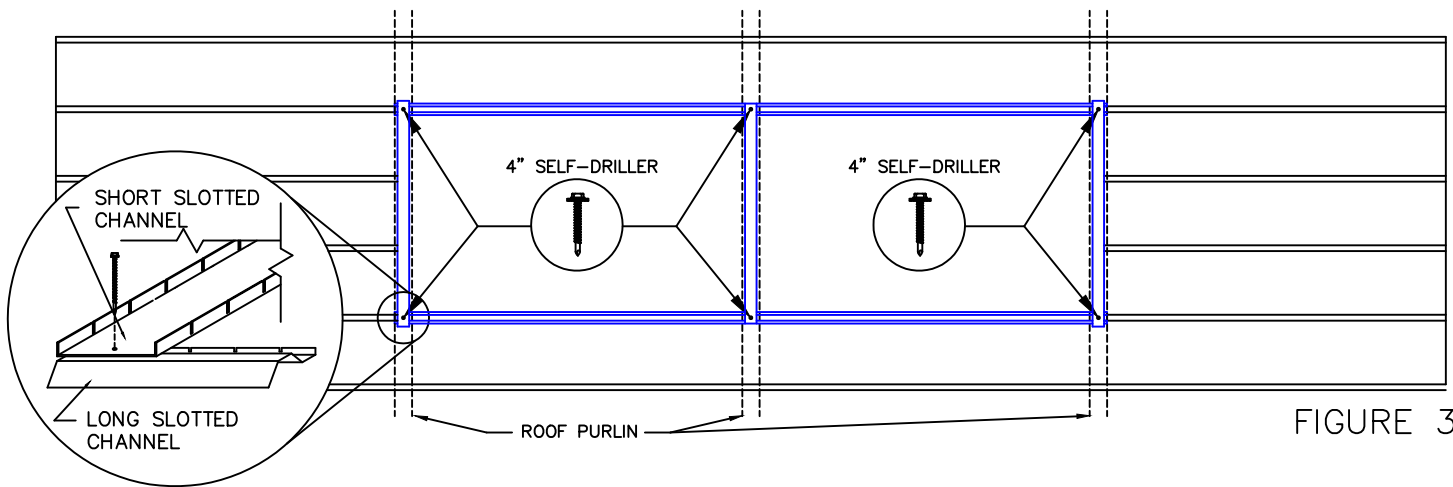


FIGURE 3

## STEP 4: SET SCREEN & TIGHTEN (FIG 4)

POSITION SCREEN INTO SLOTS LOCATED ON THE LONG & SHORT CHANNELS. PLACE CHANNEL CAPS OVER THE SHORT SLOTTED CHANNELS AND SECURE WITH SELF-DRILLERS THROUGH PILOT HOLES.

COMPLETE INSTALLATION BY TIGHTENING (6) 4" SELF-DRILLERS THROUGH ACCESS HOLES UNTIL SNUG.

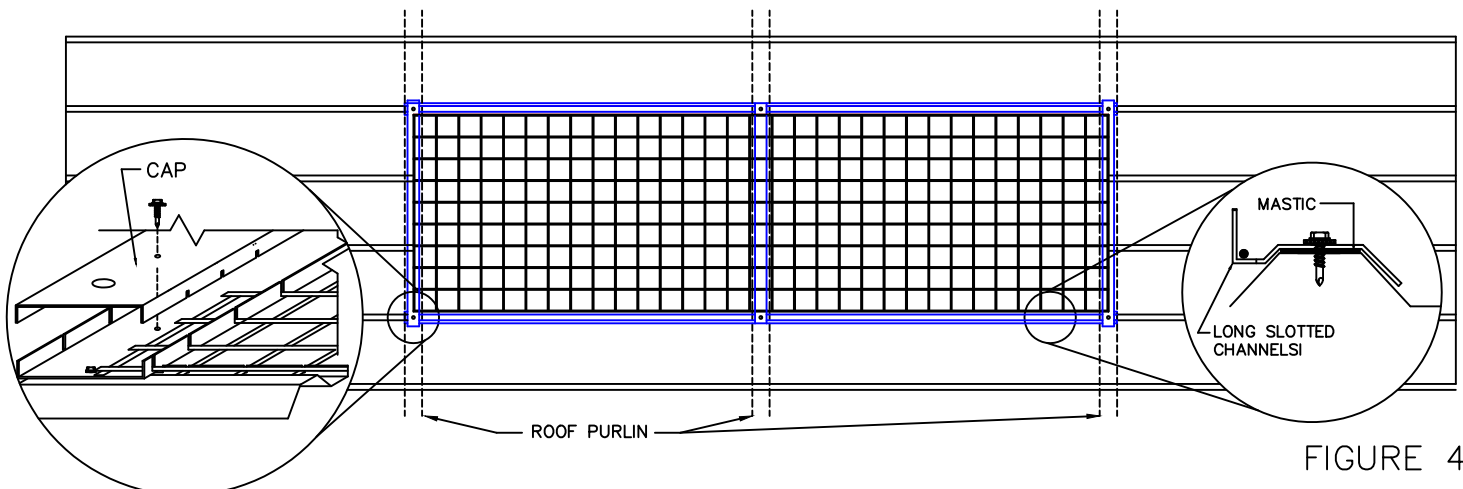


FIGURE 4