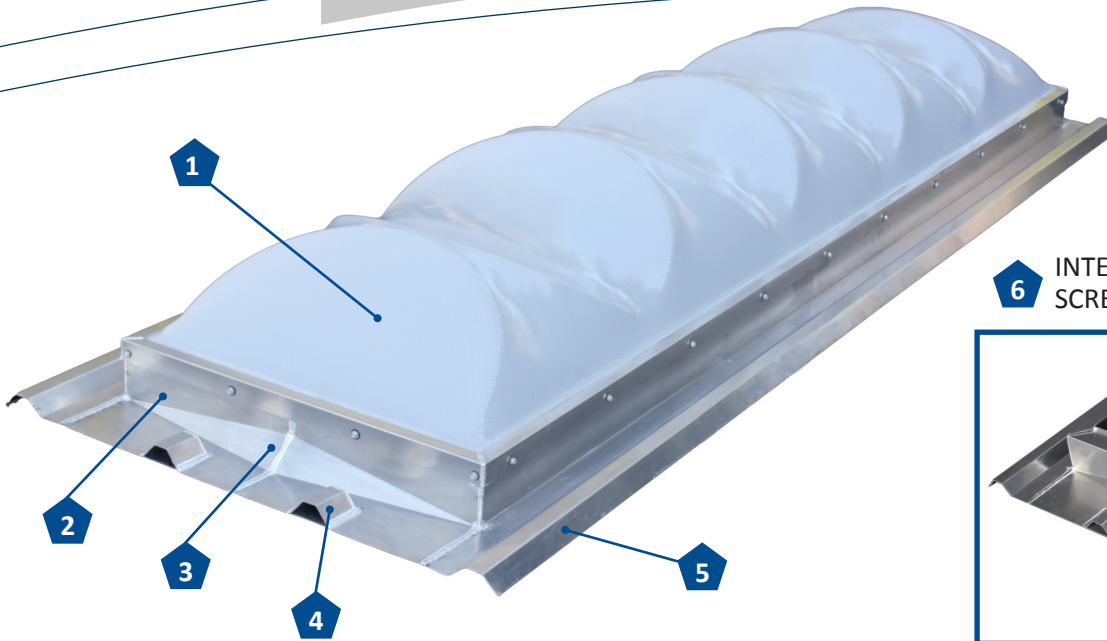
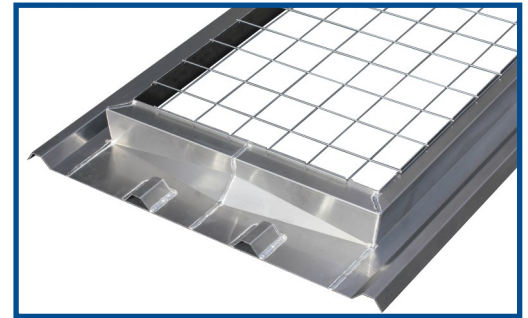


RS36 PRISMATIC SKYLIGHT

Skyline Series for 12" O.C. High-Rib Roofs



6 INTEGRATED FALL PROTECTION SCREEN - OSHA COMPLIANT



PRODUCT FEATURES & OPTIONS

All kits ship complete and installation ready!

1 SINGLE OR DOUBLE DOME—White prismatic glazing achieves 70% visible light with 100% diffusion for balanced interior daylighting. Optional second dome with insulated curb when specified.

2 RS36 MODULAR BASE—0.080" Aluminum for maximum strength and reduced weight (65 LBS). Full penetration welds for true weather-tightness. Heavy gauge aluminum retainer cap seals dome to base.

3 INTEGRATED WATER CRICKET—Formed aluminum cricket provides ample watershed while preventing material from gathering behind the cricket.

4 CUSTOM FIT PANEL CONTOURS—Fits the profile of any 12" O.C. high-rib roof system. Panel contours are factory welded and install under the roof panel on the upslope and over the roof panel on the downslope.

5 CONTINUOUS LAYOVER SIDE FLANGES—Formed to integrate with any 12" O.C. high-rib roof system. Kits include all mastic, sealant and fasteners required for installation.

6 FALL PROTECTION—Safety screen comes standard and factory installed. The RS36 Fall Protection System is compliant with OSHA CFR 1910.23 and 1926.501.

KEY BENEFITS

Typical Aged LTP

| RS36 Skyline Series

★ Combines safety & performance with a lower installed cost vs individual skylight and safety screen alternatives

- ◆ 10'-4" long, intended to easily replace typical LTP skylight
- ◆ UV additive in plastic resists yellowing from sun exposure
- ◆ Includes factory-installed OSHA fall protection screen
- ◆ No sub-frame or backer-channel is required
- ◆ Installs quickly, similar to a single roof panel
- ◆ Perfect for retrofit or new construction—ag, manufacturing, warehouse, auto shops and more

