



STATIONARY LOUVER

formed aluminum with straight blade

FA-4004

CONSTRUCTION

- **Frame:** 4" deep channel, 0.063" 5052 H32 Aluminum
- **Blades:** 4" deep, 45° angle, 0.063" 5052 H32 Aluminum
- **Screen:** 1/2" Mesh x 0.063" aluminum when indicated
- **Finish:** Mill or custom color when indicated
- Riveted and/or welded, with drip lip, jamb, and sill flanges when indicated
- Minimum Panel Size: 12" x 12", Maximum Panel Size: 96" x 96"
- Undersized 1/2" in A & B dimensions providing 1/4" perimeter clearance
- Approximate shipping weight is: 6 lb./square foot
- Louvers larger than max require field assembly of smaller sections

FEATURES

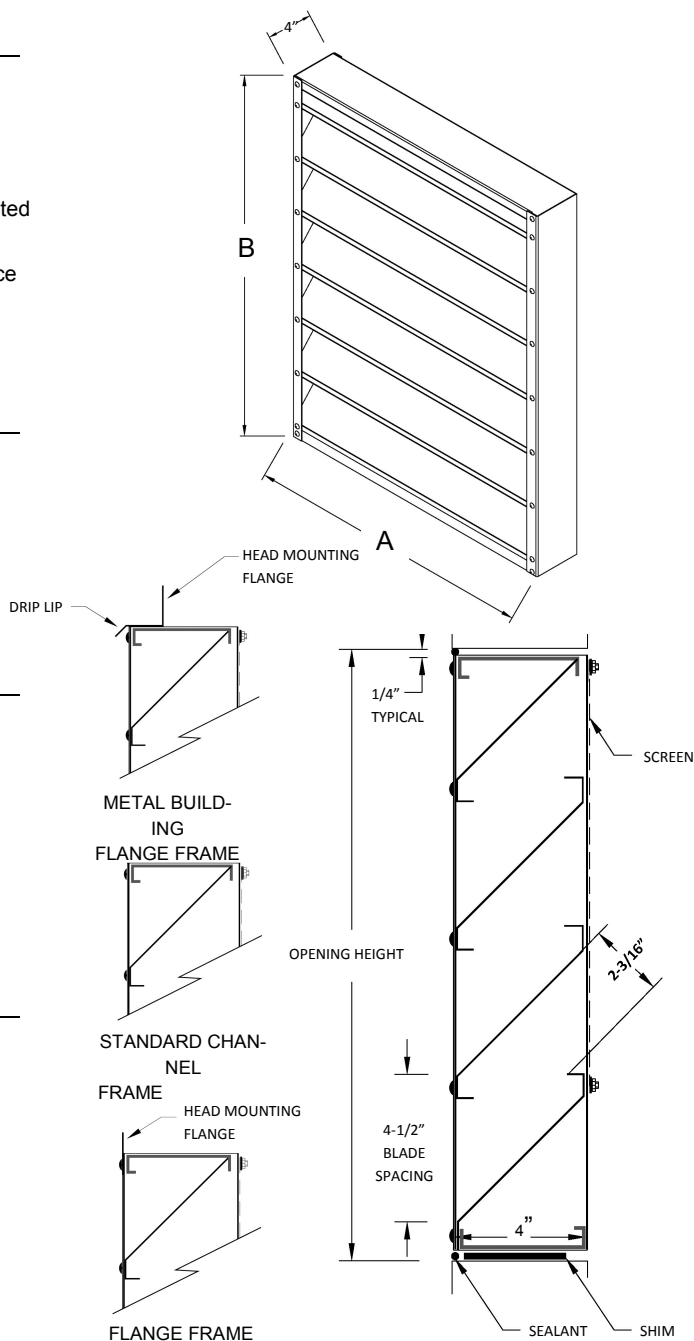
- Free Area 42.3%, Water Penetration 0.01oz at 800 FPM free area velocity, Pressure Drop 0.13 in wg at 800 FPM and 5,408 SCFM
- Durable / light weight construction

OPTIONS

- Finish options: Mill finish Baked enamel Kynar
- Filter racks housing
- Security bars
- Insect screen (bird screen is standard)
- Hinged frame
- Rivet concealment caps

FRAME CONSTRUCTION (X)

- Metal Building Flanges (MB)
- Standard Channel Frame (C)
- Flange Frame (F)



TAG	QTY	WIDTH "A"	HEIGHT "B"	FRAME	FINISH	OPTIONS

Customer	
Job Name	Model
Architect	Date



PERFORMANCE RAT-

stationary louver (fg-4004)

LOUVER HEIGHT - INCHES	LOUVER WIDTH - INCHES														
	FA4004	12	18	24	30	36	42	48	54	60	66	72	78	84	90
12	0.25	0.39	0.53	0.67	0.82	0.96	1.10	1.24	1.38	1.53	1.67	1.81	1.95	2.09	2.24
18	0.48	0.75	1.03	1.30	1.57	1.85	2.12	2.40	2.67	2.94	3.22	3.49	3.77	4.04	4.31
24	0.64	1.00	1.37	1.73	2.10	2.46	2.83	3.20	3.56	3.93	4.29	4.66	5.02	5.39	5.75
30	0.89	1.39	1.90	2.41	2.92	3.42	3.93	4.44	4.94	5.45	5.96	6.47	6.97	7.48	7.99
36	1.12	1.76	2.40	3.04	3.67	4.31	4.95	5.59	6.23	6.87	7.51	8.15	8.79	9.43	10.06
42	1.28	2.01	2.74	3.47	4.20	4.93	5.66	6.39	7.12	7.85	8.58	9.31	10.04	10.77	11.50
48	1.53	2.40	3.27	4.14	5.02	5.89	6.76	7.63	8.50	9.38	10.25	11.12	11.99	12.87	13.74
54	1.76	2.76	3.77	4.77	5.77	6.78	7.78	8.79	9.79	10.80	11.80	12.80	13.81	14.81	15.82
60	1.92	3.01	4.11	5.20	6.30	7.39	8.49	9.59	10.68	11.78	12.87	13.97	15.06	16.16	17.25
66	2.17	3.40	4.64	5.88	7.12	8.35	9.59	10.83	12.06	13.30	14.54	15.78	17.01	18.25	19.49
72	2.40	3.77	5.14	6.50	7.87	9.24	10.61	11.98	13.35	14.72	16.09	17.46	18.83	20.20	21.57
78	2.56	4.02	5.48	6.94	8.40	9.86	11.32	12.78	14.24	15.70	17.16	18.62	20.08	21.54	23.01
84	2.80	4.41	6.01	7.61	9.21	10.82	12.42	14.02	15.63	17.23	18.83	20.43	22.04	23.64	25.24
90	3.04	4.77	6.50	8.24	9.97	11.71	13.44	15.18	16.91	18.65	20.38	22.12	23.85	25.58	27.32
96	3.20	5.02	6.85	8.67	10.50	12.32	14.15	15.98	17.80	19.63	21.45	23.28	25.11	26.93	28.76

Suggested Specification

Furnish and install louvers as hereafter specified where shown on plans or as described in schedules. Louvers shall be stationary straight blade type entirely contained within a 4" frame. Louver components (heads, jambs, sills, blades and mullions) shall be factory assembled by the louver manufacturer. Louver sizes too large for shipping shall be built up by the contractor from factory assembled louver sections to provide overall sizes required. Louver design shall limit span between visible mullions to 8 feet and shall incorporate structural supports required to withstand a wind load of 20 pounds per square foot equivalent of a 90 MPH wind. (Specifier may substitute any loading required).

Louvers shall be R&S Model FA-4004 with construction as follows:

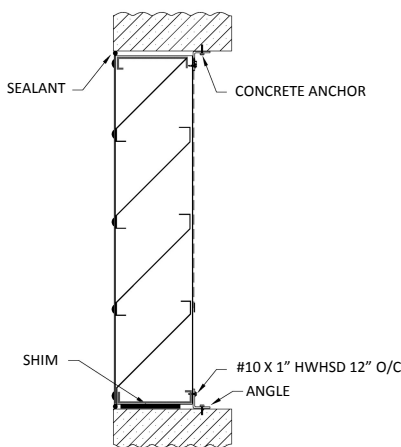
FRAME: 0.063" 5052 H32 aluminum

BLADES: 0.063" 5052 H32 aluminum positioned at 45 degrees on 4-1/2" centers

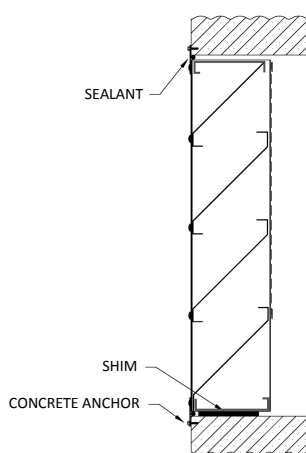
SCREEN: 19 GA galvanized steel 1/2" mesh screen

FINISH: Select finish from baked polyester (powder coat), Kynar, anodized, or mill with touch-ups on welds

Masonry Wall



Flange Mount



Metal Building Wall

